



**AMI** /Automated Metering Infrastructure  
Smart Water Meter Reader Solution

VEGA Integration Corp. (Japan)



# AMI Smart Water Meter Reader Solution

- VEGA Integration Carrier's energy management system can monitor the energy consumption data and energy consumption of a designated area, line or point in real time, providing a real basis for managers to formulate energy saving plans. Through the storage and accumulation of energy consumption data, combined with business analysis, the establishment of energy consumption data models, so as to discover and correct bad energy habits to achieve the best energy saving results, provide accurate data and scientific guidance for the formulation of energy saving strategies.



category



Water Electricity Gas Coal Hot Cold

item



Air Con Lighting Socket Heater Surveillance

area



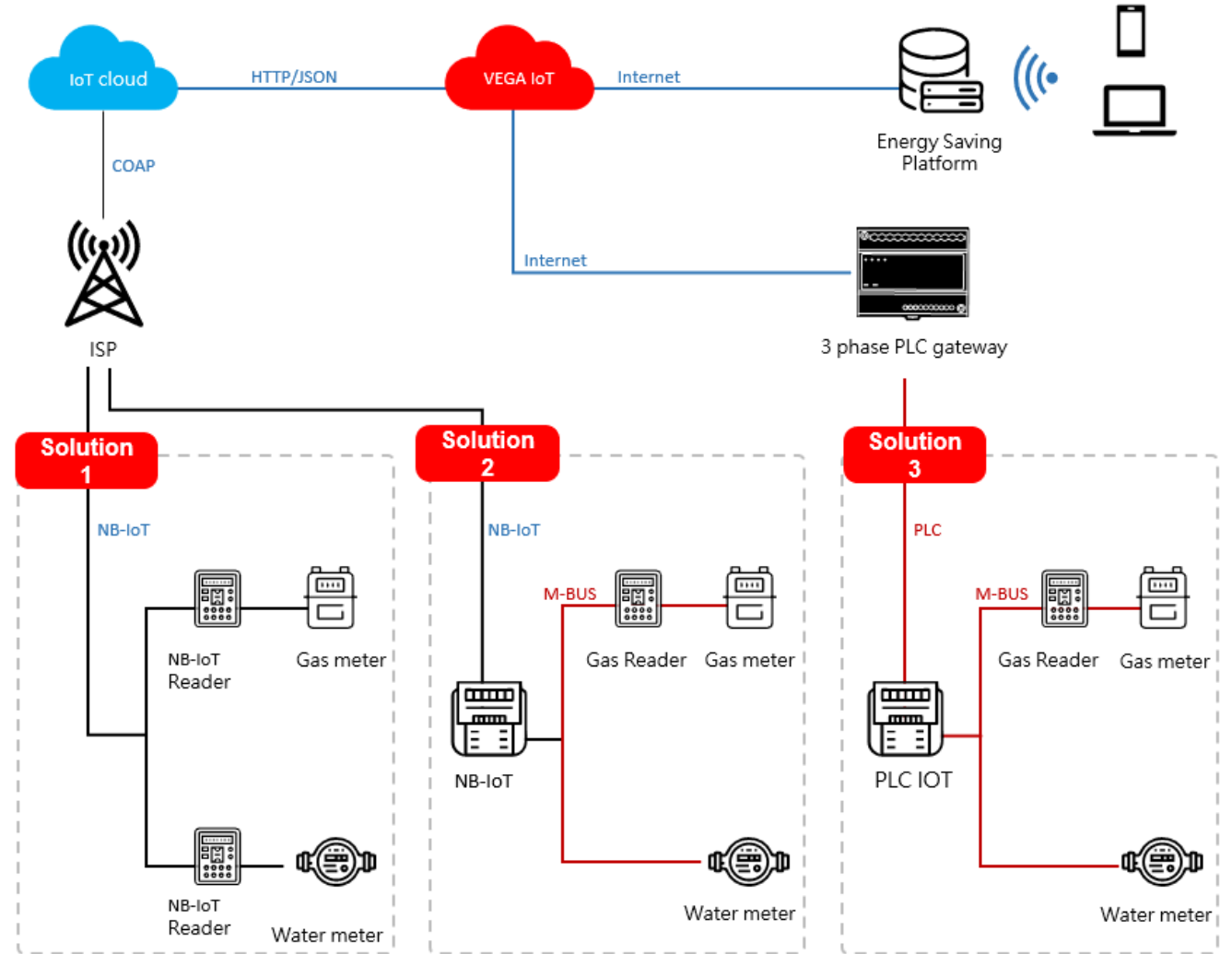
Office Building Conference Room Restaurant Parking Engine Room

# AMI Smart Water Meter Reader Solution

## Water (gas) reading & monitor

### NB-IoT Solution

- The water (gas) meter reading is recognized by the meter reader, and uploaded to the cloud platform through the NB-IoT network to realize the full automation of the meter reading system. Make on-site copying work simpler, faster, and more stable, and realize integrated management of IOT.
- The NB-IoT meter reader or MBUS meter reader is the end device in the architecture diagram . Responsible for collecting and identifying water meter readings ;
- NB-IoT meter reader or NB-IoT collector and mobile operator use NB-IoT communication to upload data;
- NB-IoT platform uses UDP for network layer and COAP protocol for application layer;
- Embed your own profile file in the operator platform to transform the COAP protocol into JSON format protocol;
- Business cloud (such as VEGA's Energy Management Cloud Platform) platform stores data and performs statistical analysis;
- Users access visual materials through APP or WEB.



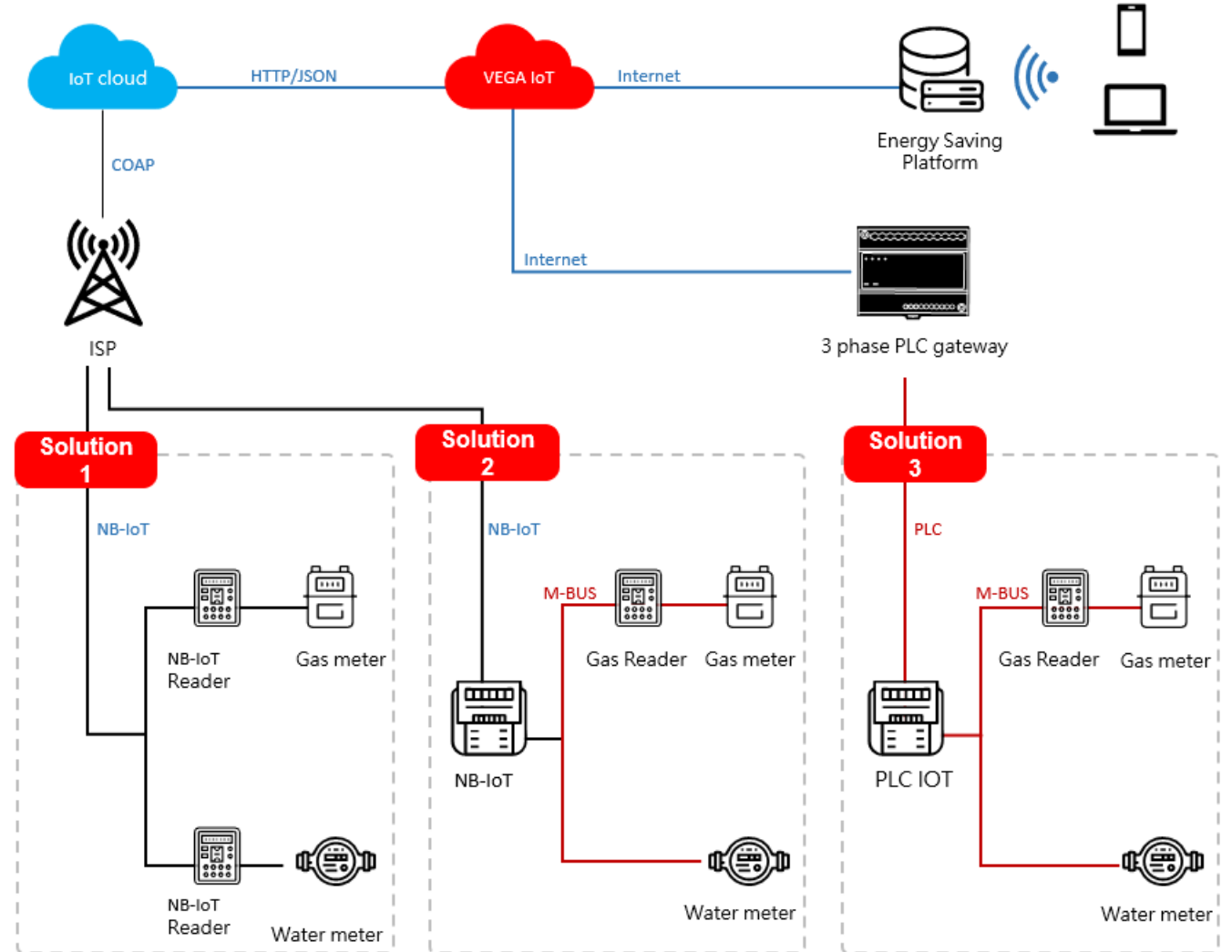
# AMI Smart Water Meter Reader Solution

## Water (gas) reading & monitor

### PLC (Power Line Control) solution

The water (gas) meter reading is identified by the meter reader, and the data is transmitted to the three-phase gateway through the power line carrier network through the collector, and finally uploaded to the energy management platform to realize the full automation of the meter reading system.

- The MBUS meter reader is the end device in the architecture diagram and is responsible for collecting and identifying water meter readings;
- The collector uses the MBUS interface to obtain data from the meter reader, and sends the data to the three-phase gateway through the power carrier communication network;
- Energy management platform obtains data from three-phase gateways and performs data collation and analysis.



# AMI Smart Water Meter Reader Solution



## Smart Water Meter Reader

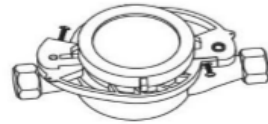


### Performance Features

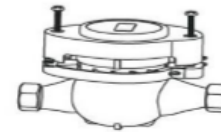
- Easy to install, easy to operate, and 3 minutes to transform a water meter.
- The algorithm is advanced, the recognition is accurate as artificial, the reading success rate is high.
- The product structure is perfect, with national technology patent, has both automatic identification and artificial reading.
- The product has rationalized application design in the design concept, thin as a dollar coin, beautiful and fashionable.
- The product supports the intelligent transformation system, which can provide the whole set of meter reading program.
- Support multiple communication modes: wireless, MBUS, etc., and support CJT188-2004 standard communication protocol.



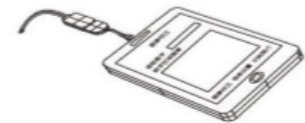
### Installation



① Mounting bracket



② Electronic silo



③ Setting the word wheel range



# Thank you

— THANK YOU FOR WATCHING —



VEGA Integration Corp. (Japan)

大阪市北区天満二丁目1-12天満橋SEビル4F

[www.vega-tech.co.jp](http://www.vega-tech.co.jp)

